

# Home Concepts™



AMERICAN MADE  
  
FAMILY OWNED

By **WELLBORN**  
CABINET, INC.®



Kingston Square Maple, Natural

Whether you are a new family building an affordable first home or breaking ground on a weekend getaway spot, the Home Concepts brand by Wellborn Cabinet, Inc. was designed with you and your builder in mind. Home Concepts is part of the Wellborn family of products, ensuring quality at an economical price point.

Whatever you choose, Home Concepts is sure to have a style to fit your décor and budget. From our family to yours, we present the Home Concepts Series.



Kingston Square Maple, Light





Kingston Arch Maple, Spiceberry



York Maple, Light



Kingston Arch Maple, Light





Kingston Arch Oak, Light



Kingston Square Oak, Medium





Kingston Arch Oak, Light



Kingston Square Oak, Medium 5





Hampton Square Maple, Light



Hampton Square Maple, Medium



Hampton Square Maple, Natural





Hampton Square Oak, Medium



Hampton Square Oak, Light 7





Providence Thermofoil, White



Providence Thermofoil, White







# Door Styles

## Fairfax

- Traditional Overlay
- Profiled Door and Drawer Front Edges
- Veneered Recessed Center Panel

### Fairfax Square Maple



Light Sable Coffee

### Fairfax Square Oak



Light Sable Coffee

*Fairfax:* Fairfax has limited availability of cabinets and options. Not all cabinets shown on pages 14-15 are available.

## Hampton

- Traditional Overlay
- Veneer Recessed Center Panel
- Profiled Door and Drawer Front Edges

### Hampton Square Maple



Natural Light Medium Sable Sienna Spiceberry Coffee

### Hampton Square Oak



Light Medium Sable Sienna Coffee

## Kingston

- Traditional Overlay
- Veneer Raised Center Panel
- Profiled Door and Drawer Front Edges

### Kingston Square Maple



Natural Light Medium Sable Sienna Spiceberry Coffee

### Kingston Square Oak



Light Medium Sable Sienna Coffee

### Kingston Arch Maple



Natural Light Medium Sable Sienna Spiceberry Coffee

### Kingston Arch Oak



Light Medium Sable Sienna Coffee



## Layton Maple



Natural Light Medium Sable Sienna Spiceberry Coffee

## Layton Oak



Light Medium Sable Sienna Coffee

### Layton

- Shaker Traditional Overlay
- Veneer Recessed Center Panel
- Square Door and Drawer Front Edges

## York Maple



Natural Light Medium Sable Sienna Spiceberry Coffee

## York Oak



Light Medium Sable Sienna Coffee

### York

- Shaker Full Overlay
- Veneer Recessed Center Panel
- Square Door and Drawer Front Edges

## Cambridge Square MDF



Glacier Divinity

## Cambridge Arch MDF



Glacier Divinity

### Cambridge

- Full Overlay
- Raised Center Panel Appearance
- Profiled Door and Drawer Front Edges

## Providence Thermofoil



White

### Providence

- Traditional Overlay
- Raised Center Panel Appearance
- Profiled Door and Drawer Front with Routed Finger Pull

## Metro Laminate



White Linen Natural Maple Sienna Spiceberry

### Metro

- Full Overlay
- Doors have Vertical Graining
- Drawer Fronts have Horizontal Graining
- Melamine Door and Drawer Front with Edge Banding on all Edges

## Towne Laminate



Natural Maple Sienna Spiceberry

### Towne

- Full Overlay
- Doors and Drawer Fronts have Horizontal Graining
- Melamine Door and Drawer Front with Edge Banding on all Edges



# Accessories



*Whatnot Shelf*



*Single Oven Cabinet*



*Diagonal Corner Wall Cabinet*



*Microwave Cabinet*



*Base Blind Corner Cabinet with Swing Out Shelves*



*Sliding Shelves*



*Base Lazy Susan*



*Double Wastebasket*



*Countertop Support*



*Desk End Panel*



*Vanity Knee Drawer*



*Shelves*

## WOOD SPECIES

### Maple



Maple is widely used in the cabinetry industry. This wood species features a straight grain with several distinctive characteristics. These include unique figures such as bird's-eye, fiddle back, mineral streaks and curly grain patterns. Finely textured with a natural luster, this creamy-white to light reddish-brown wood is often used for cabinets and floors.

### Oak



Authentic American red oaks are open-pored and have grain patterns. Wellborn's manufacturing technology presents oak with straighter grains than most cabinet lines, and our process minimizes the wide grains and reduces the widths of cathedrals in oak.

### MDF



Using high pressure and temperatures, MDF is formed by combining wood fibers with a wax resin binder to form panels. It is made of wood veneer. It is much more dense than normal particle board. This is a durable and tough wood product, commonly used in the construction industry.

### Laminate



Laminate is a decorative panel with resin-saturated printed paper thermally fused to a particleboard or MDF core. The thermally fused melamine process bonds the paper and board using heat and pressure. The paper gives the appearance of wood grain or painted finishes.

### Thermofoil



Thermofoil doors and drawer fronts are covered in a strong, scratch-resistant thermofoil that is thermally glued and vacuum-sealed. To create the popular raised panel appearance we use precision, diamond-head routers to carve the double-step perimeter edge and center panel detailing from a solid slab of medium density fiberboard.



# Cabinet Construction

## STANDARD

1. Face Frames:  $\frac{3}{4}$ " x  $1\frac{3}{4}$ " solid wood face frame, assembled using mortise and tenon construction.
2. Adjustable Shelves:  $\frac{3}{4}$ " furniture board with wood grain lamination on two sides, banding on edges and dual locking WellLock® Shelf Clips.
3. Drawer Boxes:  $\frac{3}{4}$ " furniture board drawer sides with wood grain lamination to match cabinet interior, tenoned to accept  $\frac{1}{2}$ " sub-front and back.  $\frac{1}{8}$ " Hardboard drawer bottom with wood grain/white lamination.
4. Drawer Fronts: Drawer front has adjustability.
5. Drawer Slides: 75-pound rated epoxy coated, double captive guide system, side mounted, adjustable, self-closing with mounting brackets at rear.



6. End Panels:  $\frac{1}{2}$ " furniture board with wood grain laminated end panels and banded on top and bottom edges of wall cabinets to complement door.
7. Cabinet Tops & Bottoms:  $\frac{1}{2}$ " furniture board with wood grain lamination/solid wood brace on 36" wide and larger cabinets.
8. Backs:  $\frac{1}{8}$ " wood grain laminated MDF with fiber board hanging rails.
9. Toe Kicks:  $\frac{1}{2}$ " unfinished furniture board full height captive toe kick.
10. Interiors: natural maple wood grain/white laminate.
11. I-Beam:  $\frac{1}{2}$ " x 3" I-Beam furniture board support dadoed into front, back and side.

*Standard Drawer*



$\frac{3}{4}$ " Laminated furniture board drawer sides with epoxy coated self-closing, side-mount drawer slides.

*Plywood Drawer Upgrade Option*



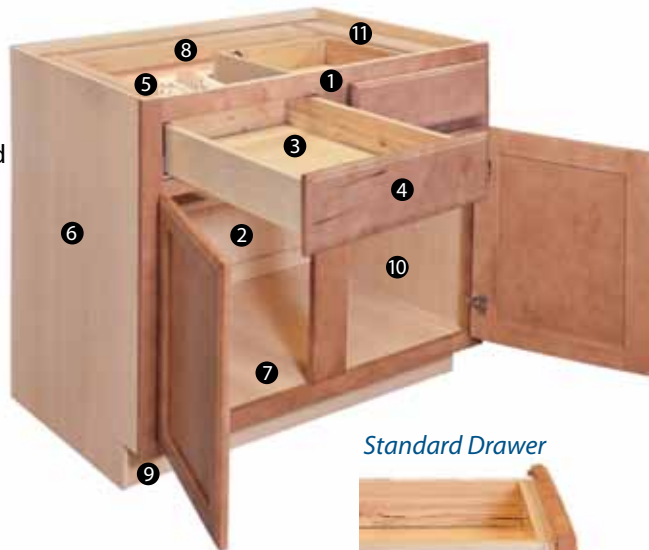
$\frac{3}{4}$ " Plywood drawer with dovetail joints and undermount drawer slides.

NOTE: For Thermofoil door styles, the cabinet interior and exterior are white laminate, the face frames are white finished maple and the drawer front is  $\frac{3}{4}$ " thermofoil laminated furniture board.

For Laminate door styles in White and Linen, the cabinet interior is matching white laminate and the exterior is matching white or linen laminate, the face frames are matching finished maple and the drawer front is  $\frac{3}{4}$ " melamine laminated front.

## ALL PLYWOOD CABINET (APC) OPTION

1. Face Frames:  $\frac{3}{4}$ " thick,  $1\frac{3}{4}$ " frame, solid wood assembled using mortise and tenon construction.
2. Adjustable Shelves:  $\frac{3}{4}$ " plywood with wood grain lamination on two sides, banding on edges and dual locking WellLock® Shelf Clips.
3. Drawer Boxes:  $\frac{3}{4}$ " plywood dovetail drawer sides in a natural finish.
4. Drawer Fronts:  $\frac{3}{4}$ " solid wood drawer front.
5. Drawer Slides: 75-pound rated epoxy coated, undermount.



*Standard Drawer*



$\frac{3}{4}$ " Plywood drawer with dovetail joints and undermount drawer slides. Dovetail joints are unfinished.

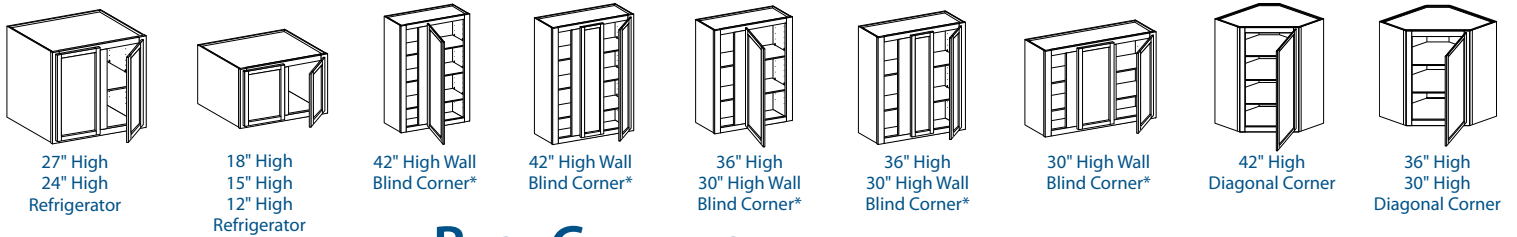
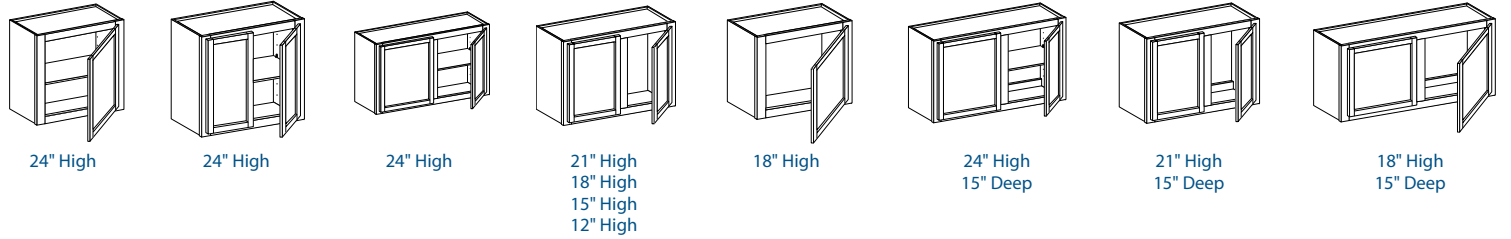
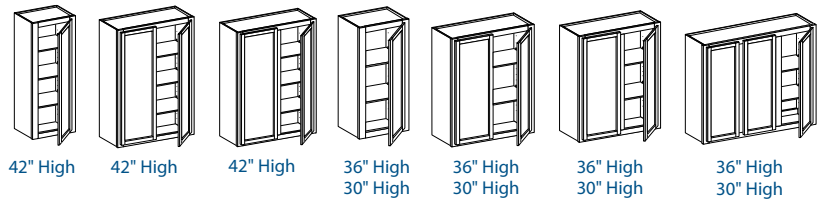
6. End Panels:  $\frac{1}{2}$ " unfinished plywood end panels. Matching Finished End Option available.
7. Cabinet Tops & Bottoms:  $\frac{1}{2}$ " thick plywood with wood grain lamination/solid wood brace on 36" wide and larger cabinets.
8. Backs:  $\frac{3}{16}$ " wood grain laminated plywood with plywood hanging rails.
9. Toe Kicks:  $\frac{1}{2}$ " unfinished plywood extends to cabinet floor for captive construction.
10. Interiors: plywood with natural maple wood grain laminate.
11. I-Beam:  $\frac{1}{2}$ " x 3" I-Beam plywood support dadoed into front, back and side.



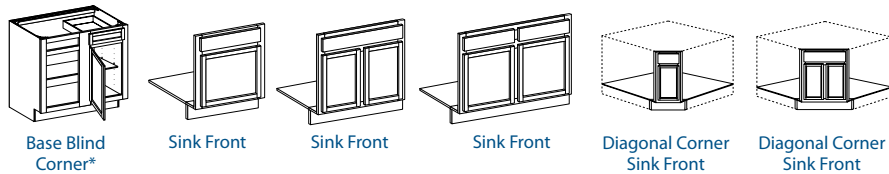
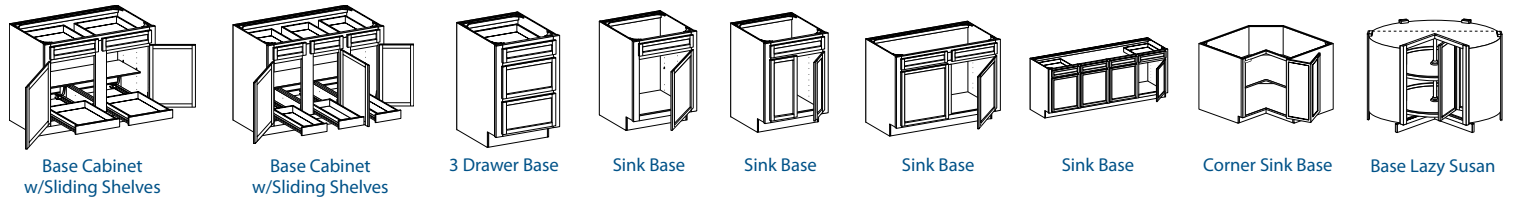
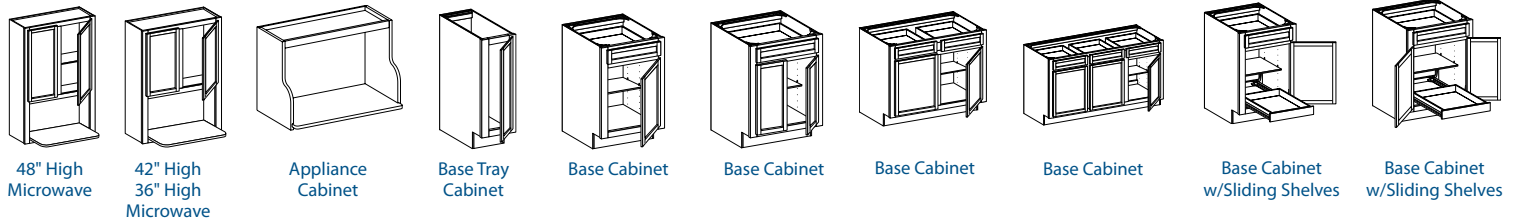
The Fairfax door style has limited availability of cabinets and options. Not all cabinets shown on pages 14-15 are available.

## WALL CABINETS

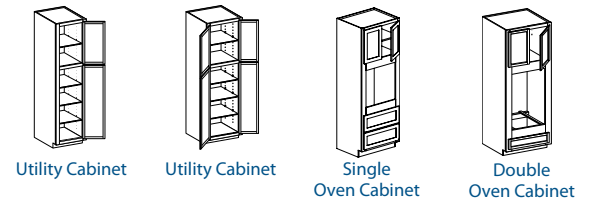
The Home Concepts product line includes all the cabinetry sizes you'll need to create the home of your dreams.



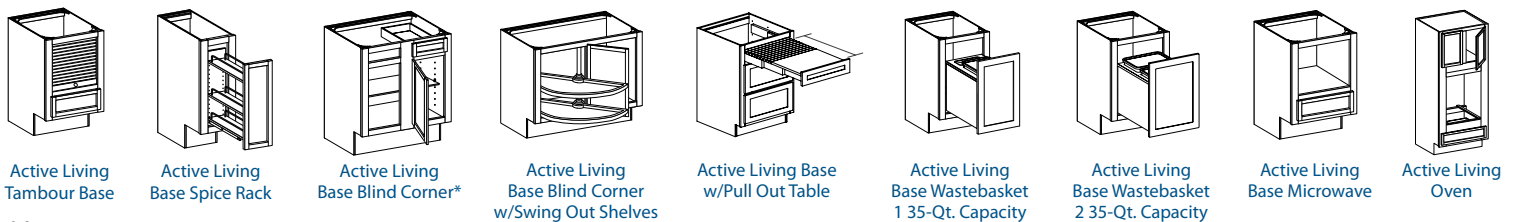
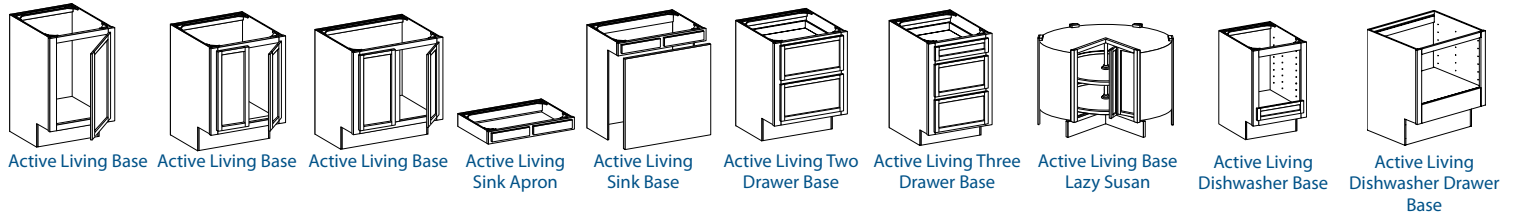
## BASE CABINETS



## TALL CABINETS

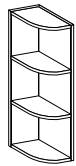


## ACTIVE LIVING BASE CABINETS





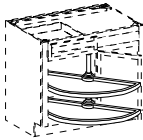
# ACCESSORIES



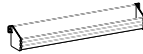
Whatnot Shelf



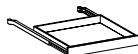
Diagonal Tambour



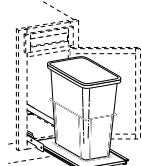
Swing Out Shelves



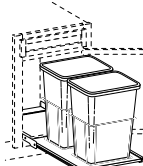
Tilt Out Tray



Sliding Shelves



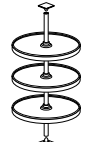
Single Wastebasket



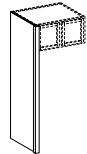
Double Wastebasket



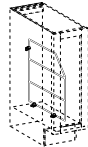
Desk End Panel



18" Plastic Rotating Shelves



Refrigerator End Panel



Wire Tray Divider

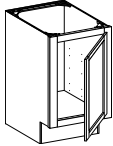


Countertop Support

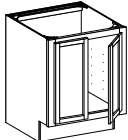


Valance

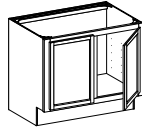
# VANITY CABINETS



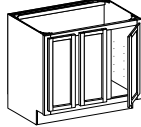
Vanity Sink



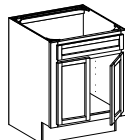
Vanity Sink



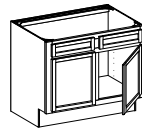
Vanity Sink



Vanity Sink



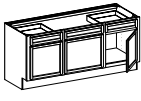
Vanity Sink w/Blank



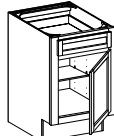
Vanity Sink w/Blank



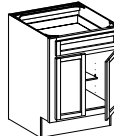
Vanity Sink Base



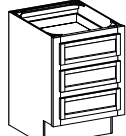
Vanity Sink Base



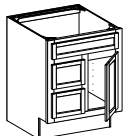
Vanity Base



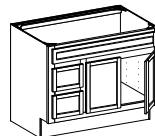
Vanity Base



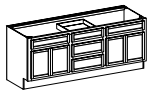
Vanity Drawer Base



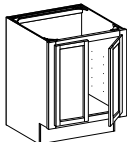
Vanity Sink Drawer Base\*\*



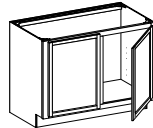
Vanity Sink Drawer Base\*\*



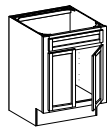
Vanity Sink Drawer Base



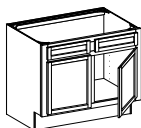
Just Right Vanity Sink



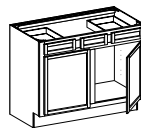
Just Right Vanity Sink



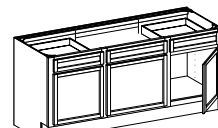
Just Right Vanity Sink w/Blank



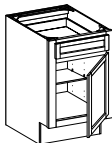
Just Right Vanity Sink w/Blank



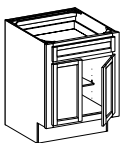
Just Right Vanity Sink Base



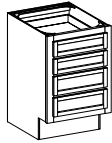
Just Right Vanity Sink Base



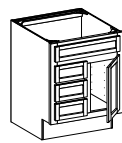
Just Right Vanity Base



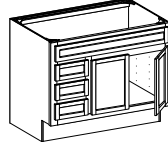
Just Right Vanity Base



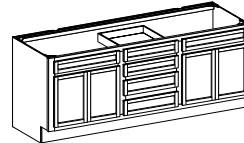
Just Right Vanity Drawer Base



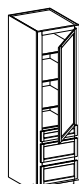
Just Right Vanity Sink Drawer Base\*\*



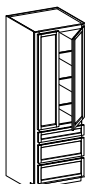
Just Right Vanity Sink Drawer Base\*\*



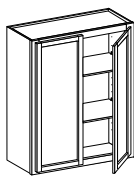
Just Right Vanity Sink Drawer Base



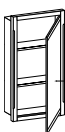
Linen Cabinet



Linen Cabinet

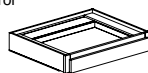


Water Closet

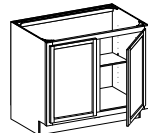


Medicine Cabinet

Door No Mirror



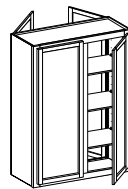
Vanity Knee Drawer



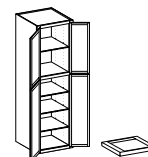
B36 FH  
FH - Full Height Doors



U248424 FO  
FO - Front Only



W3042 P  
P - Peninsula



U249024 TKU  
TKU - Toe Kick Unattached

# SEMI-CUSTOM OPTIONS

# WOOD MOULDINGS



Scribe Moulding



Baten Moulding



Shoe Moulding



Corner Moulding



Soft Moulding



Inside Corner Moulding



Angled Inside Corner Moulding



Angled Outside Corner Moulding



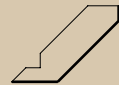
Rope Moulding



Dentil Moulding



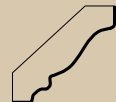
Full Overlay Crown Moulding



Shaker Crown Moulding



Small Crown Moulding



Crown Moulding



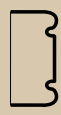
Traditional Crown Moulding



Decorative Crown Moulding



Classic Wood Edge Moulding



Light Rail Moulding



Decorative Panel Moulding

\*\*Left Hand Shown



## The Wellborn Quality in Home Concepts

Since 1961, Wellborn Cabinet, Inc. has been manufacturing quality kitchen and bath cabinetry in Ashland, Alabama. It all began in a small cabinet shop to build cabinets for the local markets. Since that time, Wellborn has become a state of the art manufacturing facility of over 1.8 million square feet that combines some of the most advanced technology systems in the industry with over 50 years of acquired knowledge and experience in high quality cabinetry craftsmanship.

## Green Choice is About Taking Action

Environmental stewardship has been part of Wellborn's culture since its beginning. This responsibility has never been just about words. It has been about decades of actions, investments and practices. At Wellborn we have recycling programs, utilize wood waste to generate power and steam and continue to lower VOC emissions through technology. We also partner with our suppliers to improve their environmental programs. This is why you will find the KCMA Environmental Stewardship Program seal on our cabinetry.

The Green Choice program ensures that you are purchasing a brand of cabinets from a company that takes conscious steps to protect and minimize the overall impact on our environment.



By **WELLBORN**  
CABINET, INC.®

Distributed By:



38669 Hwy. 77 • Ashland, Alabama 36251  
(256) 354-7151 • Fax (256) 354-7022  
wellborn.com



Due to the natural variation and aging process, minor differences may be noticed in color match when replacing doors on existing cabinetry or adding additional cabinetry at a later date. It is a characteristic of stained wood finishes, thermofoil and laminate cabinetry to age over time when exposed to smoke, sunlight or general household detergents and chemicals. Therefore, we recommend using only a soft, clean cloth or furniture polish containing natural oils and cleaning emulsifiers to clean the finish of your Home Concepts wood cabinets. Products containing wax or silicone polishes are NOT recommended. In order to maintain the maximum quality and beauty of your thermofoil and laminate cabinetry, avoid exposure to moisture to the back edge of the doors. Undue wetness could result in delamination over time.

Due to the natural characteristics of wood and the limitations of photography and the lithographic printing process, the woods and wood finishes shown in this brochure may not accurately depict those offered by Home Concepts. See your local Home Concepts dealer for actual wood sample color selections and for complete warranty details. The Home Concepts Series has a machine sanded finishing process and does not include the detailed hand sanding technique featured in the Wellborn Collection. Therefore, Wellborn Cabinet, Inc. does not recommend designs combining these series. Combining the Home Concepts with the Select Series and Premier Series in the same design will void the cabinet warranty.